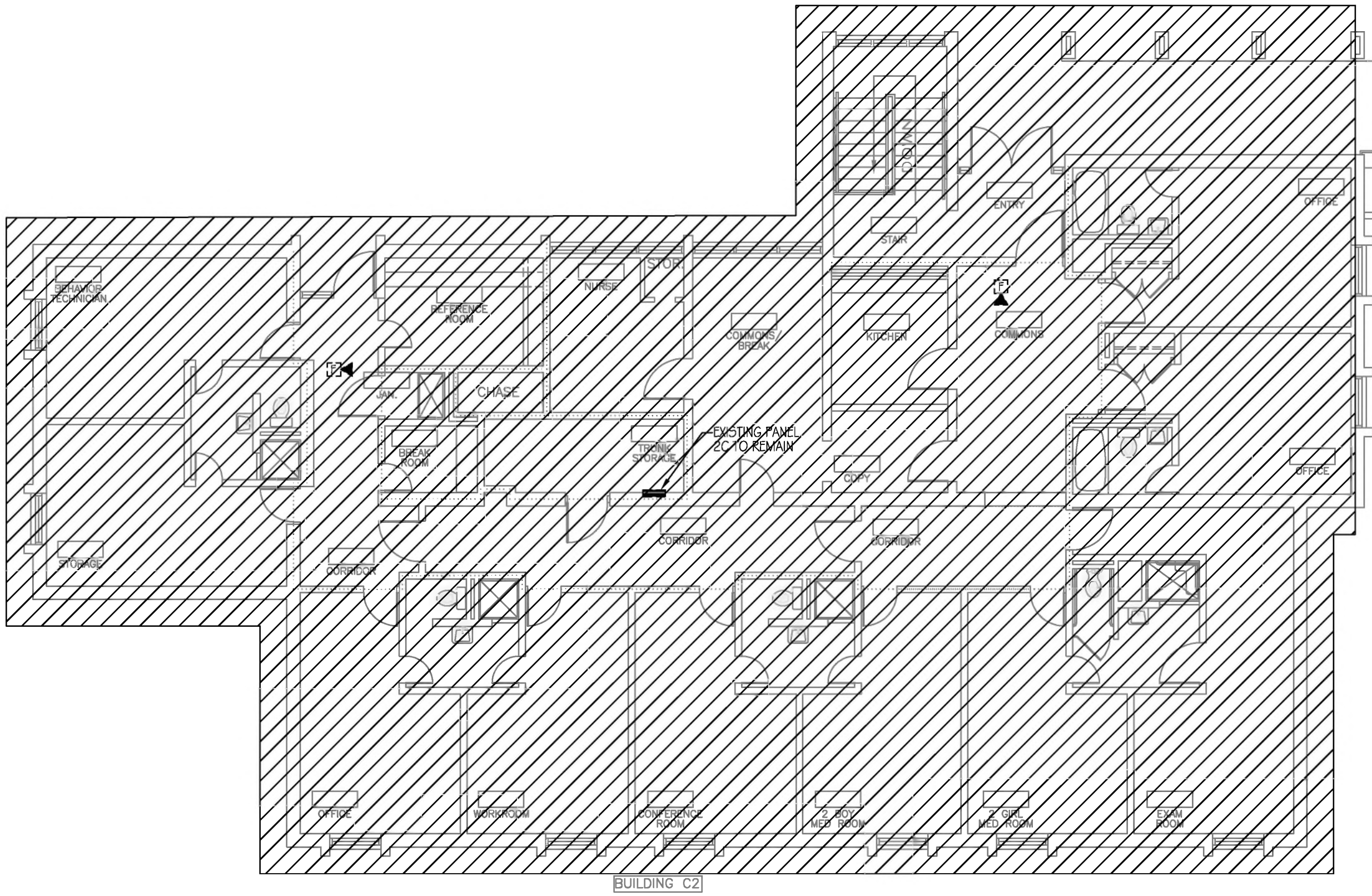
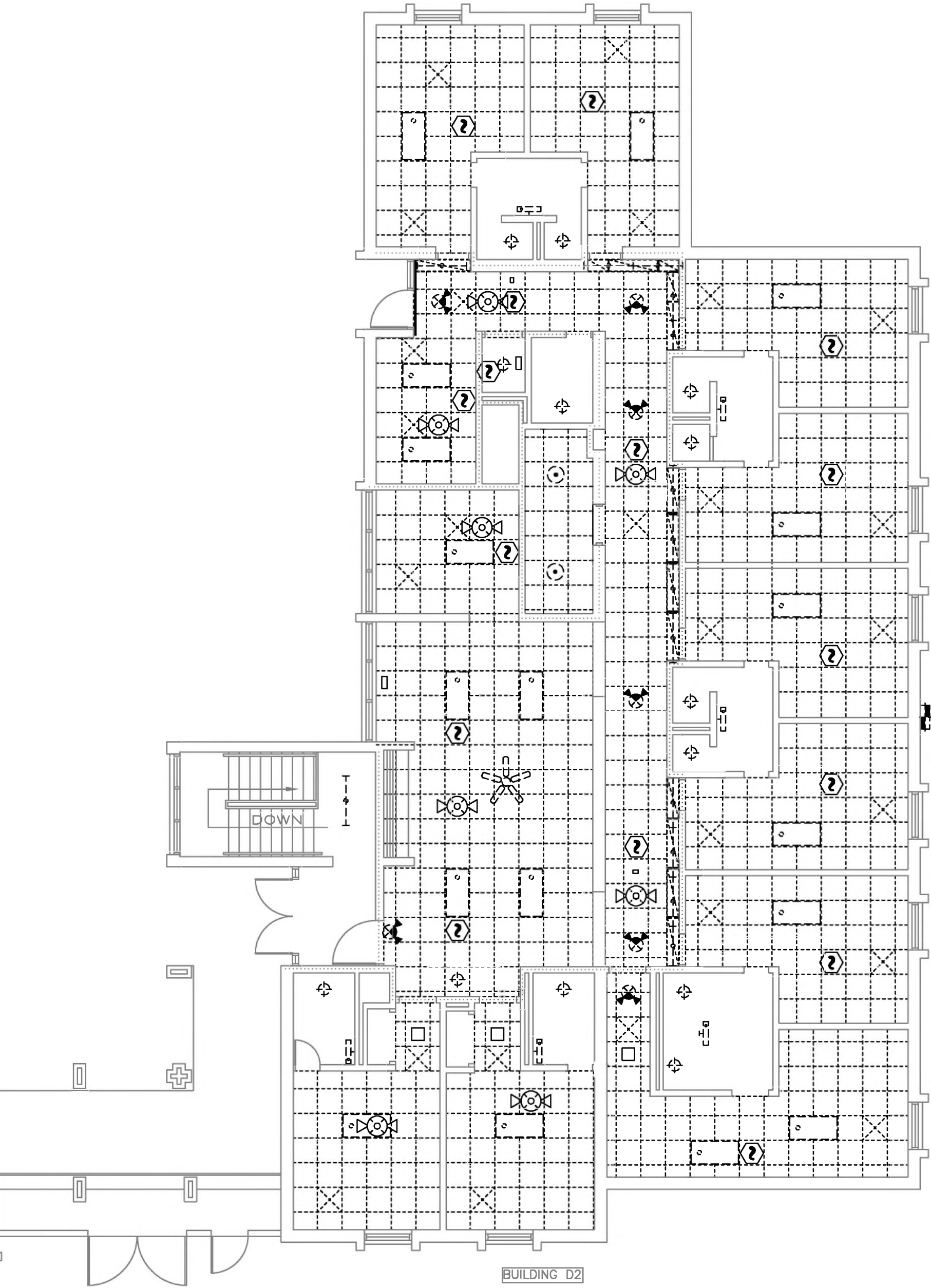


REFLECTED CEILING LEGEND	
	PLATE TO BE IDENTIFIED
	OVERHEAD LIGHT
	RECESSED CAN REMAINING IN RESTROOMS
	24" X 48" FLOURECENT
	12" X 48" FLOURESCENT
	WALL MOUNTED FLOURESCENT AT VANITY
	12" X 48" CEILING MOUNTED FLOURESCENT
	CEILING MOUNTED FLOURESCENT
	CEILING MOUNTED BOX
	CEILING MOUNTED LIGHT
	24" X 24" MECH. RETURN AIR GRILLES - REFER TO MECH
	FIRE ALARM
	SMOKE DETECTOR
	WIFI ROUTER
	CEILING MOUNTED EXIT SIGN
	CEILING FAN
	WALL MOUNTED EMERGENCY LIGHT
	AIR VENT
	24" X 24" ACOUSTICAL CEILING SYSTEM TO BE DEMOLISHED
	5/8" GYPSUM BOARD CEILING



1 BUILDING C2 - NOT IN SCOPE
AD-103 SCALE: 1/8" = 1'=0"



2 BUILDING D1 - REFLECTIVE CEILING DEMO PLAN
AD-103 SCALE: 1/8" = 1'=0"

CEILING DEMOLITION NOTES:

1. REMOVE EXISTING GRID SYSTEM TO INCLUDE ALL ASSOCIATED GRIDS, SUPPORTS, WIRE TIES, ETC. REFER TO NEW WORK RCP SHEETS FOR CEILINGS SCHEDULED TO REMAIN.
2. REMOVE EXISTING LIGHTING FIXTURES ON CEILINGS IN RESTROOMS AND WALL MOUNTED FIXTURES ABOVE LAVATORIES.

REVISIONS				

ATLANTEC
ENGINEERS, PA

3221 BLUE RIDGE ROAD, SUITE 113
RALEIGH, NC 27612
(919) 571-1111

RAYMOND

316 WEST MILLBROOK ROAD, SUITE 201
RALEIGH, NORTH CAROLINA
OFFICE: (919) 872-7866
WWW.RAYMOND.GLOBAL
LICENSE #53143 COMM 0482

PREPARED FOR:
NC DEPARTMENT
OF INSTRUCTION
SCO #
24-27792-01A

GOVERNOR MOREHEAD SCHOOL
SPRINKLER, ADA TOILET, LIGHTING
UPGRADES FOR DORMS A, B, & D
RALEIGH, NC

CONTENTS:
REFLECTIVE
CEILING DEMO
PLAN - 1ST FLS.
BUILDING D

DATE:
05/27/2025
FOR
CONSTRUCTION
DESIGNER:
ENGINEER:

SHEET NO.
AD-103
OF

